

TEBP (phospho-S133) polyclonal antibody

Catalog: BCP01624

Host: Rabbit

Reactivity: Human,Mouse,Rat

BackGround:

Molecular chaperone that localizes to genomic response elements in a hormone-dependent manner and disrupts receptor-mediated transcriptional activation, by promoting disassembly of transcriptional regulatory complexes.

Product:

Rabbit IgG, 1mg/ml in PBS with 0.02% sodium azide, 50% glycerol, pH7.2

Molecular Weight:

~ 18 kDa

Swiss-Prot:

Q15185

Purification&Purity:

The antibody was affinity-purified from rabbit antiserum by affinity-chromatography using epitope-specific immunogen and the purity is > 95% (by SDS-PAGE).

Applications:

WB: 1:500~1:1000

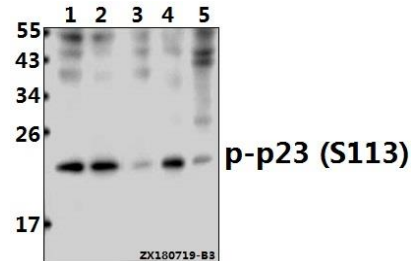
Storage&Stability:

Store at 4 °C short term. Aliquot and store at -20 °C long term. Avoid freeze-thaw cycles.

Specificity:

TEBP (phospho-S133) polyclonal antibody detects endogenous levels of TEBP protein only when phosphorylated at Ser133.

DATA:



Western blot (WB) analysis of TEBP (phospho-S133) pAb at 1:500 dilution

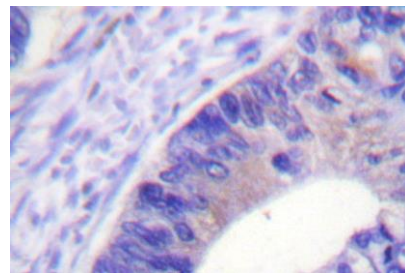
Lane1:A2780 whole cell lysate(40ug)

Lane2:Hela whole cell lysate(40ug)

Lane3:PC3 whole cell lysate(40ug)

Lane4:The Testis tissue lysate of Mouse(40ug)

Lane5:The Ovary tissue lysate of Rat(40ug)



Note:

For research use only, not for use in diagnostic procedure.