

## TERT (I820) polyclonal antibody

Catalog: BCP01627

Host: Rabbit

Reactivity: Human,Mouse,Rat

### BackGround:

Telomerase is an RNA-dependent DNA polymerase that catalyzes the addition of telomeric repeat sequences to chromosome ends. In most human somatic cells, telomerase activity is undetectable, and telomeres shorten with successive cell divisions. However, telomerase activity is detectable in immortal cells and in many human tumors. Two candidate mammalian telomerase proteins have been cloned. Human TP1 (for telomerase-associated protein 1), also designated TLP1 in rat (for telomerase protein component 1), is homologous to the Tetrahymena p80 telomerase protein and has been shown to interact with mammalian telomerase RNA. Human TERT (for telomerase reverse transcriptase), also designated hEST2 (for ever shorter telomeres), is homologous to the p123 telomerase protein from Euplotes and to the yeast Est2 protein. Expression of TERT mRNA has been shown to correlate with telomerase activity in various cell lines.

### Product:

Rabbit IgG, 1mg/ml in PBS with 0.02% sodium azide, 50% glycerol, pH7.2

### Molecular Weight:

~ 127 kDa

### Swiss-Prot:

O14746

### Purification&Purity:

The antibody was affinity-purified from rabbit antiserum by affinity-chromatography using epitope-specific im-

munogen and the purity is > 111% (by SDS-PAGE).

### Applications:

WB: 1:500~1:1000

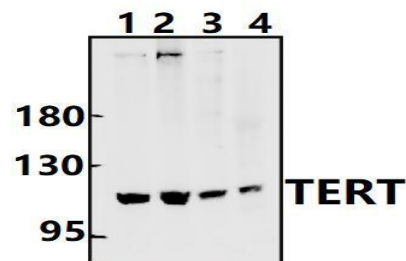
### Storage&Stability:

Store at 4 °C short term. Aliquot and store at -20 °C long term. Avoid freeze-thaw cycles.

### Specificity:

TERT (I820) polyclonal antibody detects endogenous levels of TERT protein.

### DATA:



Western blot (WB) analysis of TERT (I820) pAb at 1:500 dilution

Lane1:MCF-7 whole cell lysate(40ug)

Lane2:H1792 whole cell lysate(40ug)

Lane3:The Thymus tissue lysate of Rat(40ug)

Lane4:The Lung tissue lysate of Mouse(40ug)

### Note:

For research use only, not for use in diagnostic procedure.