

TGFβ RI (E161) polyclonal antibody

Catalog: BCP01634

Host: Rabbit

Reactivity: Human, Mouse

BackGround:

A total of three members of the TGFβ family, namely TGFβ1, TGFβ2 and TGFβ3, have been identified in mammals. Each is synthesized as a latent precursor that is subsequently cleaved forming the 112 amino acid growth factor which becomes active upon dimerization. TGFβs mediate their activity by high affinity binding to the TGFβ receptor type-II (TGFβ RII) with a cytoplasmic serine-threonine kinase domain. For signaling growth inhibition and early gene responses, TGFβ RII requires both its kinase activity and its association with a TGFβ-binding protein, designated TGFβ receptor type-I (TGFβ RI). TGFβ RI is a 503 amino acid single-pass type I membrane protein that is expressed ubiquitously and, with TGFβ RII, functions as a receptor for TGFβ. Defects in the gene encoding TGFβ RI are the cause of aortic aneurysm familial thoracic type 5 (AAT5), Loeys-Dietz syndrome type 2A (LDS2A) and Loeys-Dietz syndrome type 1A (LDS1A).

Product:

Rabbit IgG, 1mg/ml in PBS with 0.02% sodium azide, 50% glycerol, pH7.2.

Molecular Weight:

~ 58kDa

Swiss-Prot:

P36897

Purification&Purity:

The antibody was affinity-purified from rabbit antiserum by affinity-chromatography using epitope-specific im-

munogen and the purity is > 95% (by SDS-PAGE).

Applications:

WB: 1:2000~1:5000

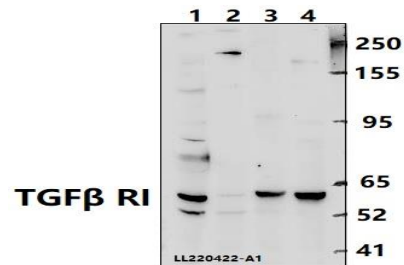
Storage&Stability:

Store at 4 °C short term. Aliquot and store at -20 °C long term. Avoid freeze-thaw cycles.

Specificity:

TGFβ RI (E161) polyclonal antibody detects endogenous levels of TGFβ RI protein.

DATA:



Western blot (WB) analysis of TGFβ RI polyclonal antibody at 1:2000 dilution

Lane1:MCF-7 whole cell lysate(40ug)

Lane2:HeLa whole cell lysate(40ug)

Lane3:BV2 whole cell lysate(40ug)

Lane4:K562 whole cell lysate(40ug)

Note:

For research use only, not for use in diagnostic procedure.