

## TH (P2) polyclonal antibody

Catalog: BCP01638

Host: Rabbit

Reactivity: Human, Mouse

### BackGround:

The enzyme tyrosine hydroxylase (TH), also designated tyrosine 3-monooxygenase (TY3H), catalyzes the conversion of tyrosine to L-dopa, which is the rate limiting step in the biosynthesis of catecholamines such as dopamine, adrenalin and noradrenalin. TH is thought to play a role in the pathogenesis of Parkinson's disease, which is associated with reduced dopamine levels. Two transcription factor binding sites in the proximal region of the TH gene, the TPA-responsive element (TRE) and the c-AMP responsive element (CRE), have been implicated in the complex regulation of the TH gene. TH is also known to be upregulated by the glia maturation factor (GMF), a Cdc 10/SWI6 motif-containing protein called V-1, and a variety of additional compounds

### Product:

Rabbit IgG, 1mg/ml in PBS with 0.02% sodium azide, 50% glycerol, pH7.2

### Molecular Weight:

~ 58 kDa

### Swiss-Prot:

P07101

### Purification&Purity:

The antibody was affinity-purified from rabbit antiserum by affinity-chromatography using epitope-specific immunogen and the purity is > 95% (by SDS-PAGE).

### Applications:

WB: 1:500~1:1000

IHC: 1:50~1:200

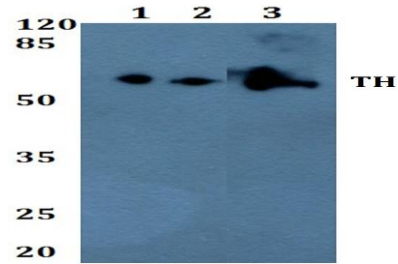
### Storage&Stability:

Store at 4 °C short term. Aliquot and store at -20 °C long term. Avoid freeze-thaw cycles.

### Specificity:

TH (P2) polyclonal antibody detects endogenous levels of TH protein.

### DATA:



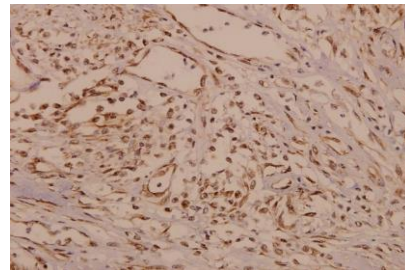
Western blot (WB) analysis of TH (P2) polyclonal antibody at 1:500 dilution

Lane1:MEF whole cell lysate(40ug)

Lane2:PC12 whole cell lysate(40ug)

Lane3:HEK293T whole cell lysate(40ug)

Lane4:K562 whole cell lysate(40ug)



Immunohistochemistry (IHC) analyzes of TH (P2) pAb in paraffin-embedded human colorectal carcinoma tissue at 1:50.

### Note:

For research use only, not for use in diagnostic procedure.