

## TIMP-2 (A47) polyclonal antibody

Catalog: BCP01646

Host: Rabbit

Reactivity: Human, Mouse, Rat

### BackGround:

TIMP-1, TIMP-2, TIMP-3 and TIMP-4 (for tissue inhibitor of metalloproteinases 1, 2, 3 and 4) complex with metalloproteinases such as collagenases, gelatin-ases and stromelysins, resulting in irreversible inactivation of the metallopro-teinase. TIMP-1 has been found to be identical to EPA (erythroid-potential activity). Parathyroid hormone has been shown to be a regulator of TIMP-2 in osteoblastic cells. TIMP-3 may be involved in regulating trophoblastic invasion of the uterus and remodeling of the extracellular matrix during the folding of epithelia, and in the formation, branching and expansion of epithelial tubes. TIMP-4 is most highly expressed in heart, with low levels expressed in liver, brain, lung, thymus and spleen.

### Product:

Rabbit IgG, 1mg/ml in PBS with 0.02% sodium azide, 50% glycerol, pH7.2

### Molecular Weight:

~ 24 kDa

### Swiss-Prot:

P16035

### Purification&Purity:

The antibody was affinity-purified from rabbit antiserum by affinity-chromatography using epitope-specific immunogen and the purity is > 95% (by SDS-PAGE).

### Applications:

WB: 1:500~1:1000

IHC: 1:50~1:200

IF: 1:50~1:200

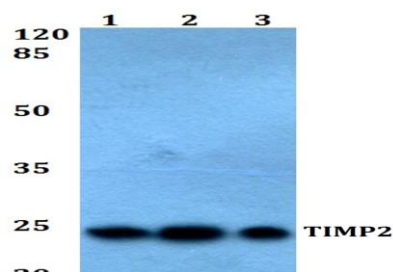
### Storage&Stability:

Store at 4 °C short term. Aliquot and store at -20 °C long term. Avoid freeze-thaw cycles.

### Specificity:

TIMP2 (A47) polyclonal antibody detects endogenous levels of TIMP2 protein.

### DATA:



Western blot (WB) analysis of TIMP2 (A47) polyclonal antibody at 1:500 dilution

Lane1:Hela whole cell lysate(40ug)

Lane2:HEK293T whole cell lysate(40ug)

Lane3:The lung tissue lysate of Mouse(40ug)

Lane4:The lung tissue lysate of Rat(40ug)

Lane5:The placenta tissue lysate of Rat(40ug)

### Note:

For research use only, not for use in diagnostic procedure.