

## TIMP-4 (S206) polyclonal antibody

Catalog: BCP01647

Host: Rabbit

Reactivity: Human, Mouse, Rat

### BackGround:

TIMP-1, TIMP-2, TIMP-3 and TIMP-4 (for tissue inhibitor of metalloproteinases-1, -2, -3 and -4) complex with metalloproteinases such as collagenases, gelatinases and stromelysins, resulting in irreversible inactivation of the metalloproteinase. TIMP-1 was found to be identical to EPA (erythroidpotentiation activity). Parathyroid hormone has been shown to be a regulator of TIMP-2 in osteoblastic cells. TIMP-3 may be involved in regulating trophoblastic invasion of the uterus as well as in regulating remodeling of the extracellular matrix during the folding of epithelia, and in the formation, branching and expansion of epithelial tubes. TIMP-4 is most highly expressed in heart and low levels of TIMP-4 are expressed in liver, brain, lung, thymus and spleen.

### Product:

Rabbit IgG, 1mg/ml in PBS with 0.02% sodium azide, 50% glycerol, pH7.2

### Molecular Weight:

~ 26 kDa

### Swiss-Prot:

Q99727

### Purification&Purity:

The antibody was affinity-purified from rabbit antiserum by affinity-chromatography using epitope-specific immunogen and the purity is > 95% (by SDS-PAGE).

### Applications:

WB: 1:500~1:1000

IHC: 1:50~1:200

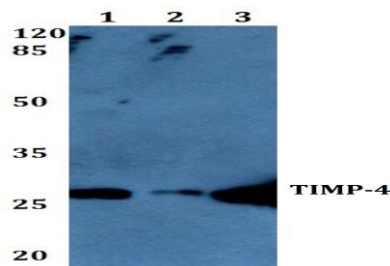
### Storage&Stability:

Store at 4 °C short term. Aliquot and store at -20 °C long term. Avoid freeze-thaw cycles.

### Specificity:

TIMP4 (S206) polyclonal antibody detects endogenous levels of TIMP4 protein.

### DATA:



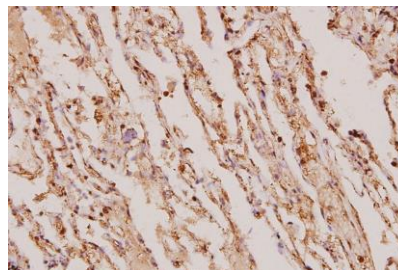
Western blot (WB) analysis of TIMP-4 (S206) polyclonal antibody at 1:500 dilution

Lane1: HEK293T whole cell lysate(40ug)

Lane2: H9C2 whole cell lysate(40ug)

Lane3: The Heart tissue lysate of Rat(40ug)

Lane4: The Heart tissue lysate of Mouse(40ug)



Immunohistochemistry (IHC) analyzes of TIMP-4 (S206) pAb in paraffin-embedded human lung carcinoma tissue at 1:100.

### Note:

For research use only, not for use in diagnostic procedure.