

TIS11D (H243) polyclonal antibody

Catalog: BCP01650

Host: Rabbit

Reactivity: Human,Mouse,Rat

BackGround:

TIS11D, also known as ZFP36LA (zinc finger protein 36, C3H type-like 2), BRF2 (butyrate response factor 2), ERF2 or RNF162C, is a 494 amino acid protein that localizes to the nucleus and contains two CSH1-type zinc fingers. Belonging to the TIS11 family of early response proteins, TIS11D is thought to function as a nuclear transcription factor that binds to 5'UUAUUUAUUU-3' core RNA sequences and may regulate growth factor-induced cellular responses. The gene encoding TIS11D maps to human chromosome 2, which houses over 1,400 genes and comprises nearly 8% of the human genome. Harlequin ichthyosis, a rare and morbid skin deformity, is associated with mutations in the ABCA12 gene, while the lipid metabolic disorder sitosterolemia is associated with defects in the ABCG5 and ABCG8 genes.

Product:

Rabbit IgG, 1mg/ml in PBS with 0.02% sodium azide, 50% glycerol, pH7.2

Molecular Weight:

~ 40 kDa

Swiss-Prot:

P47974

Purification&Purity:

The antibody was affinity-purified from rabbit antiserum by affinity-chromatography using epitope-specific immunogen and the purity is > 95% (by SDS-PAGE).

Applications:

WB: 1:500~1:1000

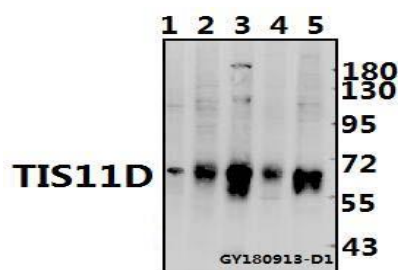
IHC: 1:50~1:200

Storage&Stability:

Store at 4 °C short term. Aliquot and store at -20 °C long term. Avoid freeze-thaw cycles.

Specificity:

TIS11D (H243) polyclonal antibody detects endogenous levels of TIS11D protein.

DATA:

Western blot (WB) analysis of TIS11D (H243) polyclonal antibody at 1:500 dilution

Lane1:PC12 whole cell lysate(40ug)

Lane2:HCT116 whole cell lysate(40ug)

Lane3:CT26 whole cell lysate(40ug)

Lane4:A375 whole cell lysate(40ug)

Lane5:Myla2059 whole cell lysate(40ug)

Immunohistochemistry (IHC) analyzes of TIS11D (H243) pAb in paraffin-embedded human lung cancer tissue.

Note:

For research use only, not for use in diagnostic procedure.