

## TRAF3 (S289) polyclonal antibody

Catalog: BCP01667

Host: Rabbit

Reactivity: Human

### BackGround:

TRAF1 and TRAF2 (for TNF receptor-associated factors 1 and 2, respectively). Both function to form heterodimeric complexes and associate with the cytoplasmic domain of TNF-R2. A third member of this protein family, alternatively designated CD40 bp, CRAF1, LAP1 or TRAF3, has been identified and shown to associate with the cytoplasmic domain of CD40. The similarity between a specific region of TRAF3 with regions of TRAF1 and TRAF2 define a "TRAF-C" domain that is necessary and sufficient for CD40 binding and homodimerization.

### Product:

Rabbit IgG, 1mg/ml in PBS with 0.02% sodium azide, 50% glycerol, pH7.2

### Molecular Weight:

~ 68 kDa

### Swiss-Prot:

Q13114

### Purification&Purity:

The antibody was affinity-purified from rabbit antiserum by affinity-chromatography using epitope-specific immunogen and the purity is > 95% (by SDS-PAGE).

### Applications:

WB: 1:500~1:1000

IF/ICC: 1:50~1:200

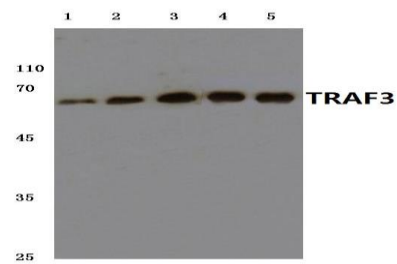
### Storage&Stability:

Store at 4 °C short term. Aliquot and store at -20 °C long term. Avoid freeze-thaw cycles.

### Specificity:

TRAF3 (S289) polyclonal antibody detects endogenous levels of TRAF3 protein.

### DATA:



Western blot (WB) analysis of TRAF3 (S289) pAb at 1:500 dilution

Lane1:HEK293T whole cell lysate(40ug)

Lane2:HCT116 whole cell lysate(20ug)

Lane3:A549 whole cell lysate(40ug)

Lane4:U-87MG whole cell lysate(40ug)

### Note:

For research use only, not for use in diagnostic procedure.