

**TRAP220 (P697) polyclonal antibody**

Catalog: BCP01670

Host: Rabbit

Reactivity: Human, Mouse, Rat

**BackGround:**

In mammalian cells, transcription is regulated in part by high molecular weight coactivating complexes that mediate signaling between transcriptional activators and initiation factors. These complexes include the thyroid hormone receptor-associated protein (TRAP) complex, which interacts with thyroid receptors (TR), vitamin D receptors and other steroid receptors to facilitate hormone induced transcriptional activation. The TRAP complex consists of numerous proteins ranging in size from 20 to 240 kDa, including TRAP95, TRAP100, TRAP150, TRAP220 and TRAP230, that are characterized by the presence of a nuclear receptor recognition motif which mediates the ligand-dependent binding of TRAP proteins to the nuclear receptors. TRAP220 and TRAP100 are widely expressed and most abundantly detected in skeletal muscle, heart and placenta.

**Product:**

Rabbit IgG, 1mg/ml in PBS with 0.02% sodium azide, 50% glycerol, pH7.2

**Molecular Weight:**

~ 240 kDa

**Swiss-Prot:**

Q15648

**Purification&Purity:**

The antibody was affinity-purified from rabbit antiserum by affinity-chromatography using epitope-specific immunogen and the purity is > 95% (by SDS-PAGE).

**Applications:**

WB: 1:500~1:1000

IHC: 1:50~1:200

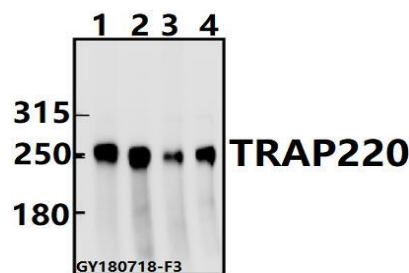
**Storage&Stability:**

Store at 4 °C short term. Aliquot and store at -20 °C long

term. Avoid freeze-thaw cycles.

**Specificity:**

TRAP220 (P697) polyclonal antibody detects endogenous levels of TRAP220 protein.

**DATA:**

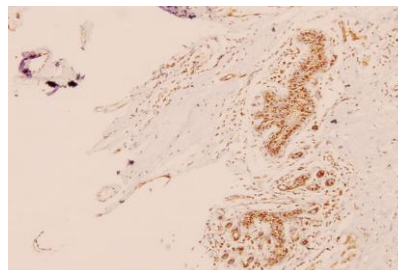
Western blot (WB) analysis of TRAP220 (P697) pAb at 1:500 dilution

Lane1:A549 whole cell lysate(40ug)

Lane2:HEK293T whole cell lysate(40ug)

Lane3:PC12 whole cell lysate(40ug)

Lane4:CT26 whole cell lysate(40ug)



Immunohistochemistry (IHC) analyzes of TRAP220 (P697) pAb in paraffin-embedded human breast carcinoma tissue at 1:100.

**Note:**

For research use only, not for use in diagnostic procedure.