

TREM1 polyclonal antibody

Catalog: BCP01672

Host: Rabbit

Reactivity: Human

BackGround:

TREM-1 (triggering receptor expressed on myeloid cells-1) is expressed in monocytes and neutrophils but not in lymphocytes, dendritic cells, or other cell types. TREM-1 is a glycoprotein that is reduced by deglycosylation, in agreement with the predicted molecular mass. TREM-1 is an activating receptor of the Ig superfamily that is expressed on human myeloid cells, selectively expressed on blood neutrophils and a subset of monocytes, and is upregulated by bacterial LPS. Immunoblot analysis shows that TREM-1 is associated with DAP12, a molecule frequently associated with activating receptors. TREM-1 and the myeloid DAP12-associating lectin (MDL-1) are recently identified receptors which associate non-covalently with DAP12 to form receptor complexes that are involved in monocytic activation and inflammatory response.

Product:

Rabbit IgG, 1mg/ml in PBS with 0.02% sodium azide, 50% glycerol, pH7.2.

Molecular Weight:

~ 25kDa

Swiss-Prot:

Q9NP99

Purification&Purity:

The antibody was affinity-purified from rabbit antiserum by affinity-chromatography using epitope-specific immunogen and the purity is > 95% (by SDS-PAGE).

Applications:

WB: 1:2000~1:5000

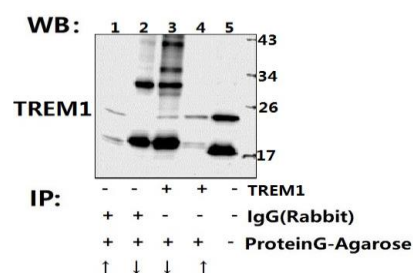
Storage&Stability:

Store at 4 °C short term. Aliquot and store at -20 °C long term. Avoid freeze-thaw cycles.

Specificity:

TREM1 polyclonal antibody detects endogenous levels of TREM1 protein.

DATA:



Western blot (WB) analysis of TREM1 polyclonal antibody at 1:2000 dilution

Lane1:The spleen tissue lysate of Rat(40ug)

Lane2:The spleen tissue lysate of mouse(40ug)

Lane3:HepG2 whole cell lysate(40ug)

Lane4:A549 whole cell lysate(40ug)

Lane5:THP-1 whole cell lysate(40ug)

Lane6:PC12 whole cell lysate(40ug)

Lane7:Raw264.7 whole cell lysate(40ug)

Note:

For research use only, not for use in diagnostic procedure.