

Tuberin (L1456) polyclonal antibody

Catalog: BCP01685

Host: Rabbit

Reactivity: Human,Rat,Mouse

BackGround:

Tuberin is a product of the TSC2 tumor suppressor gene and an important regulator of cell proliferation and tumor development. Mutations in either TSC2 or the related TSC1 (hamartin) gene cause tuberous sclerosis complex (TSC), an autosomal dominant disorder characterized by development of multiple, widespread non-malignant tumors. Tuberin is directly phosphorylated at Thr1462 by Akt/PKB. Phosphorylation at Thr1462 and Tyr1571 regulates tuberin-hamartin complexes and tuberin activity. In addition, tuberin inhibits the mammalian target of rapamycin (mTOR), which promotes inhibition of p70 S6 kinase, activation of eukaryotic initiation factor 4E binding protein 1 (4E-BP1, an inhibitor of translation initiation), and eventual inhibition of translation.

Product:

Rabbit IgG, 1mg/ml in PBS with 0.02% sodium azide, 50% glycerol, pH7.2.

Molecular Weight:

~ 200 kDa

Swiss-Prot:

P49815

Purification&Purity:

The antibody was affinity-purified from rabbit antiserum by affinity-chromatography using epitope-specific immunogen and the purity is > 95%

Applications:

WB: 1:5000~1:20000

IF: 1:50~1:200

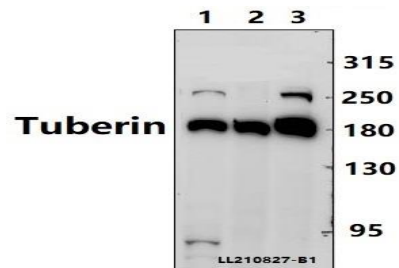
Storage&Stability:

Store at 4 °C short term. Aliquot and store at -20 °C long term. Avoid freeze-thaw cycles.

Specificity:

Tuberin (L1456) polyclonal antibody detects endogenous levels of Tuberin protein.

DATA:

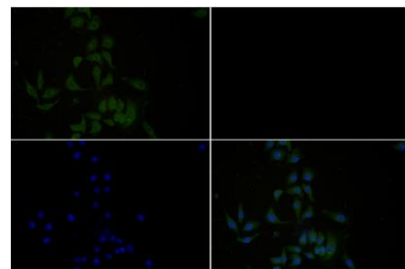


Western blot (WB) analysis of Tuberin (L1456) polyclonal antibody at 1:2000 dilution

Lane3:THP-1 whole cell lysate(40ug)

Lane4:K562 whole cell lysate(40ug)

Lane5:PC3 whole cell lysate(40ug)



Immunofluorescence analysis of A549 cells using Tuberin antibody at dilution of 1:50.

Note:

For research use only, not for use in diagnostic procedure.