

TWIK-1 (V322) polyclonal antibody

Catalog: BCP01689

Host: Rabbit

Reactivity: Human,Mouse,Rat

BackGround:

K⁺ channels are divided into three subclasses, reflecting the number of transmembrane segments (TMS), which are designated 6TMS, 4TMS and 2TMS. Members of the 4TMS class contain two distinct pore regions, and include TASK, TREK, TRAAK and TWIK. TWIK-1 mRNA is expressed abundantly in brain and at lower levels in lung, kidney and skeletal muscle. The molecular weight of TWIK-1 in mouse brain is 40 kDa under reducing conditions. TWIK-2 shares low sequence homology with other mammalian family group members, and only 34% homology with TWIK-1. Human TWIK-2 is expressed in pancreas, placenta and heart, while mouse TWIK-2 is expressed in liver. TWIK-2 is inhibited by intracellular, but not extracellular, acidification.

Product:

Rabbit IgG, 1mg/ml in PBS with 0.02% sodium azide, 50% glycerol, pH7.2

Molecular Weight:

~ 38 kDa

Swiss-Prot:

O00180

Purification&Purity:

The antibody was affinity-purified from rabbit antiserum by affinity-chromatography using epitope-specific immunogen and the purity is > 95% (by SDS-PAGE).

Applications:

WB: 1:500~1:1000

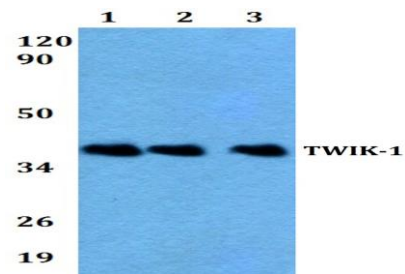
Storage&Stability:

Store at 4 °C short term. Aliquot and store at -20 °C long term. Avoid freeze-thaw cycles.

Specificity:

TWIK-1 (V322) polyclonal antibody detects endogenous levels of TWIK-1 protein.

DATA:



Western blot (WB) analysis of TWIK-1 (V322) polyclonal antibody at 1:500 dilution

Lane1:A549 whole cell lysate

Lane2:NIH-3T3 whole cell lysate

Lane3:PC12 whole cell lysate

Note:

For research use only, not for use in diagnostic procedure.