

## UCHL1 polyclonal antibody

Catalog: BCP01696

Host: Rabbit

Reactivity: Human,Mouse,Rat

### BackGround:

UCHL1 is a single chain transmembrane glycoprotein which represents the low molecular weight isoform of the Leucocyte Common Antigen (LCA). It is expressed on most thymocytes, about 45% of peripheral blood T cells, virtually all T cells in skin reactive infiltrates, and the majority of T cell malignancies. It is also found on a subset of B cells and on exceptional B cell lymphomas.

### Product:

Rabbit IgG, 1mg/ml in PBS with 0.02% sodium azide, 50% glycerol, pH7.2

### Molecular Weight:

~ 25 kDa

### Swiss-Prot:

P09936

### Purification&Purity:

The antibody was affinity-purified from rabbit antiserum by affinity-chromatography using epitope-specific immunogen and the purity is > 95% (by SDS-PAGE).

### Applications:

WB: 1:500~1:2000

### Storage&Stability:

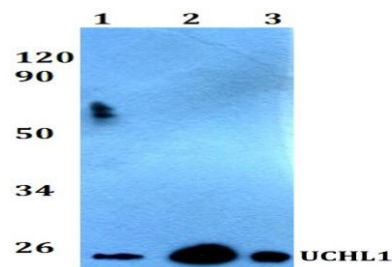
Store at 4 °C short term. Aliquot and store at -20 °C long

term. Avoid freeze-thaw cycles.

### Specificity:

UCHL1 polyclonal antibody detects endogenous levels of UCHL1 protein.

### DATA:



Western blot (WB) analysis of UCHL1 polyclonal antibody at 1:500 dilution

Lane1:HEK293T whole cell lysate(40ug)

Lane2:U251MG whole cell lysate(40ug)

Lane3:The brain tissue lysate of Mouse(40ug)

Lane4:The brain tissue lysate of Rat(40ug)

### Note:

For research use only, not for use in diagnostic procedure.