

## VASP (A232) polyclonal antibody

Catalog: BCP01705

Host: Rabbit

Reactivity: Human, Mouse, Rat

### BackGround:

VASP (vasodilator-stimulated phosphoprotein), is involved in the maintenance of cytoarchitecture by interacting with actin-like filaments. VASP shares a limited degree of homology with the amino terminus of WASP, which is frequently mutated in WAS patients. An established substrate of cAMP and cGMP dependent kinases, VASP is phosphorylated on a regulatory serine residue 157 and localizes to focal adhesions, microfilaments and highly active regions of the plasma membrane. VASP is a protein of between 46 and 50 kDa that is highly expressed in human platelets and, like WASP, may play a role in cytoskeletal organization.

### Product:

Rabbit IgG, 1mg/ml in PBS with 0.02% sodium azide, 50% glycerol, pH7.2

### Molecular Weight:

~ 40 kDa

### Swiss-Prot:

P50552

### Purification&Purity:

The antibody was affinity-purified from rabbit antiserum by affinity-chromatography using epitope-specific immunogen and the purity is > 95% (by SDS-PAGE).

### Applications:

WB: 1:500~1:1000

IHC: 1:50~1:200

IF: 1:50~1:200

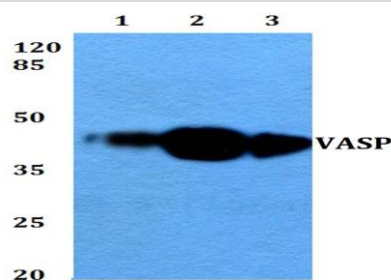
### Storage&Stability:

Store at 4 °C short term. Aliquot and store at -20 °C long term. Avoid freeze-thaw cycles.

### Specificity:

VASP (A232) polyclonal antibody detects endogenous levels of VASP protein.

### DATA:



Western blot (WB) analysis of VASP (A232) pAb at 1:500 dilution

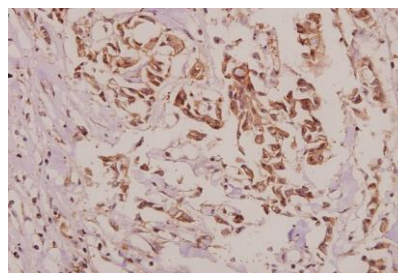
Lane1:MCF-7 whole cell lysate(40ug)

Lane2:C6 whole cell lysate(40ug)

Lane3:A549 whole cell lysate(40ug)

Lane4:PC3 whole cell lysate(40ug)

Lane5:CT26 whole cell lysate(40ug)



Immunohistochemistry (IHC) analyzes of VASP (A232) pAb in paraffin-embedded human breast carcinoma tissue at 1:50.

### Note:

For research use only, not for use in diagnostic procedure.