

α -SMA polyclonal antibody

Catalog: BCP01739

Host: Rabbit

Reactivity: Human

BackGround:

Defects in ACTA2 are the cause of aortic aneurysm familial thoracic type 6 (AAT6) [MIM:611788]. AATs are characterized by permanent dilation of the thoracic aorta usually due to degenerative changes in the aortic wall. They are primarily associated with a characteristic histologic appearance known as 'medial necrosis' or 'Erdheim cystic medial necrosis' in which there is degeneration and fragmentation of elastic fibers, loss of smooth muscle cells, and an accumulation of basophilic ground substance.

Product:

Rabbit IgG, 1mg/ml in PBS with 0.02% sodium azide, 50% glycerol, pH7.2

Molecular Weight:

~ 45 kDa

Swiss-Prot:

P62736

Purification&Purity:

The antibody was affinity-purified from rabbit antiserum by affinity-chromatography using epitope-specific immunogen and the purity is > 95% (by SDS-PAGE).

Applications:

WB: 1:1000~1:2000

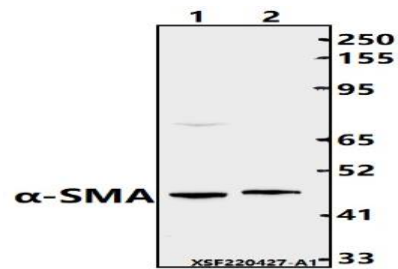
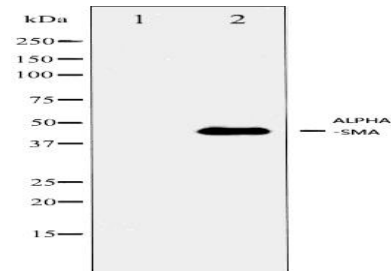
Storage&Stability:

Store at 4 °C short term. Aliquot and store at -20 °C long term. Avoid freeze-thaw cycles.

Specificity:

α -SMA polyclonal antibody detects endogenous levels of α -SMA protein.

DATA:



Western blot (WB) analysis of α -SMA pAb at 1:1000 dilution

Lane1:MCF-7 whole cell lysate(40ug)

Lane2:HepG2 whole cell lysate(40ug)

Note:

For research use only, not for use in diagnostic procedure.