

**LEF-1 (F38) polyclonal antibody**

Catalog: BCP01754

Host: Rabbit

Reactivity: Human,Rat,Mouse

**BackGround:**

Transcription factor that binds DNA in a sequence-specific manner.Participates in the Wnt signaling pathway (By similarity).Activates transcription of target genes in the presence of CTNNB1 and EP300 (By similarity).PIAG antagonizes both Wnt-dependent and Wnt-independent activation by LEF1 (By similarity).TLE1, TLE2, TLE3 and TLE4 repress transactivation mediated by LEF1 and CTNNB1.Regulates T-cell receptor alpha enhancer function.Required for IL17A expressing gamma-delta T-cell maturation and development, via binding to regulator loci of BLK to modulate expression (By similarity).May play a role in hair cell differentiation and follicle morphogenesis (By similarity).

**Product:**

Rabbit IgG, 1mg/ml in PBS with 0.02% sodium azide, 50% glycerol, pH7.2.

**Molecular Weight:**

~ 52 kDa

**Swiss-Prot:**

Q9UJU2

**Purification&Purity:**

The antibody was affinity-purified from rabbit antiserum by affinity-chromatography using epitope-specific immunogen and the purity is > 95% (by SDS-PAGE).

**Applications:**

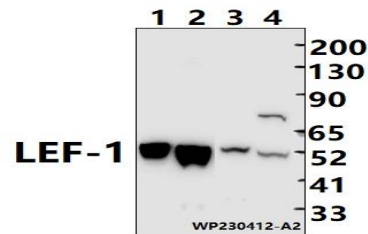
WB: 1:1000~1:2000

**Storage&Stability:**

Store at 4 °C short term. Aliquot and store at -20 °C long term. Avoid freeze-thaw cycles.

**Specificity:**

LEF-1 polyclonal antibody detects endogenous levels of LEF-1 protein.

**DATA:**

Western blot (WB) analysis of LEF-1 polyclonal antibody at 1:1000 dilution

Lane1:The brain tissue lysate of Mouse(30ug)

Lane2:The brain tissue lysate of Rat(30ug)

Lane3:HuT78 whole cell lysate(30ug)

Lane4:myla2059 whole cell lysate(30ug)

**Note:**

For research use only, not for use in diagnostic procedure.