

PRODUCT DATA SHEET

COMPLEX

Complex Biotech Co., Ltd

CD14 Protein

Catalog: BCP3308

Host: E.coli

Tag: His-tag

BackGround:

CD14 is a leucine-rich repeat-containing pattern recognition receptor with expression largely restricted to the monocyte/macrophage cell lineage. Research studies have shown that CD14 is a bacterial lipopolysaccharide (LPS) binding glycoprotein, expressed as either a GPI-linked membrane protein or a soluble plasma protein. LPS induces an upregulation of GPI-linked CD14 expression, which facilitates TLR4 signaling and macrophage activation in response to bacterial infection. The 61D3 antibody is widely used to identify cells of the monocyte/macrophage lineage.

Product:

PBS, 4M Urea, PH7.4

Molecular Weight:

~40kDa

Swiss-Prot:

P08571

Purification&Purity:

Transferred into competent cells and the supernatant was purified by NI column affinity chromatography and the

purity is > 85% (by SDS-PAGE).

Restriction Sites:

NdeI-XhoI

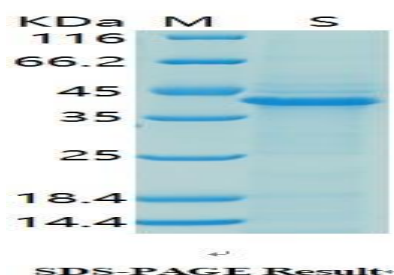
Storage&Stability:

Store at 4 °C short term. Aliquot and store at -20 °C long term. Avoid freeze-thaw cycles.

Expression Vector:

pet-22b(+)

DATA:



Note:

For research use only, not for use in diagnostic procedure.