

PRODUCT DATA SHEET

COMPLEX

Complex Biotech Co., Ltd

CD31 Recombinant Protein

Catalog: BCP3331

Host: E.coli

Tag: His-tag

BackGround:

CD31 (Platelet Endothelial Cell Adhesion Molecule-1: PECAM-1), a member of the Ig superfamily of cell adhesion molecules, is expressed by circulating platelets, monocytes, neutrophils, some T cells, and endothelial cells and modulates cell adhesion, endothelial cell migration, and angiogenesis. CD31 is phosphorylated on Tyr686 at the cytoplasmic carboxy-terminal tail upon various stimuli (e.g. mechanical or oxidative stress), presumably by Src family members. The tyrosine phosphorylation mediates associations with a number of SH2 domain-containing binding partners such as PI3 kinase, SHIP, PLC γ , and SHP-2. Thus, CD31 serves as a scaffold for various signaling molecules.

Product:

PBS, 4M Urea, PH7.4

Molecular Weight:

~63kDa

Swiss-Prot:

P16284

Purification&Purity:

Transferred into competent cells and the supernatant was

purified by NI column affinity chromatography and the purity is > 85% (by SDS-PAGE).

Restriction Sites:

NdeI-XhoI

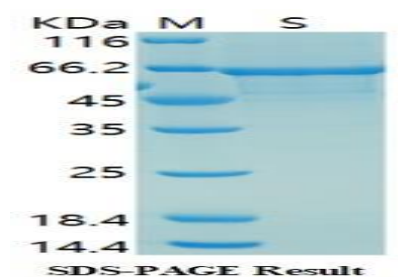
Storage&Stability:

Store at 4 °C short term. Aliquot and store at -20 °C long term. Avoid freeze-thaw cycles.

Expression Vector:

pet-22b(+)

DATA:



Note:

For research use only, not for use in diagnostic procedure.