

PRODUCT DATA SHEET

COMPLEX

Complex Biotech Co., Ltd

CD3G Recombinant Protein

Catalog: BCP3337

Host: E.coli

Tag: His-tag

His-tag

BackGround:

The T cell antigen receptor (TCR) recognizes foreign antigens and translates such recognition events into intracellular signals that elicit a change in the cell from a dormant to an activated state. Much of this signaling process can be attributed to a multisubunit complex of proteins that associates directly with the TCR. This complex has been designated CD3 (cluster of differentiation 3). It is composed of five invariant polypeptide chains that associate to form three dimers: a heterodimer of γ and ϵ chains ($\gamma\epsilon$), a heterodimer of δ and ϵ chains ($\delta\epsilon$) and a homodimer of two ζ chains ($\zeta\zeta$) or a heterodimer of ζ and η chains ($\zeta\eta$). The ζ and η chains are encoded by the same gene but differ in their carboxyl-terminal ends due to an alternative splicing event. The γ , ϵ and δ chains each contain a single copy of a conserved immunoreceptor tyrosinebased activation motif (ITAM). In contrast, the ζ chain contains three consecutive copies of the same motif. Phosphorylated ITAMs act as docking sites for protein kinases such as ZAP-70 and Syk and are also capable of regulating their kinase activity. The crystal structure of the ZAP-70 SH2 domains bound to the ζ chain ITAMs has been solved.

Product:

PBS, 4M Urea, PH7.4

Molecular Weight:

~13kDa

Swiss-Prot:

P09693

Purification&Purity:

Transferred into competent cells and the supernatant was purified by NI column affinity chromatography and the purity is > 85% (by SDS-PAGE).

Restriction Sites:

NdeI-XhoI

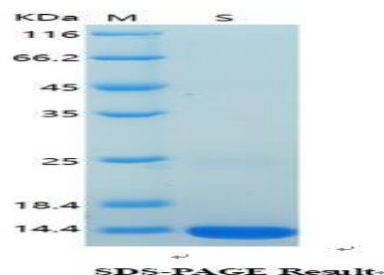
Storage&Stability:

Store at 4 °C short term. Aliquot and store at -20 °C long term. Avoid freeze-thaw cycles.

Expression Vector:

pet-22b(+)

DATA:



Note:

For research use only, not for use in diagnostic procedure.