

PRODUCT DATA SHEET

COMPLEX

Complex Biotech Co., Ltd

CD66/CEACAM1 Recombinant Protein

Catalog: BCP3352

Host: E.coli

Tag: His-tag

His-tag

BackGround:

CEACAM1 (also known as C-CAM and CD66a) is a member of CEA-related cell-adhesion molecule (CEA-CAM) subfamily of the carcinoembryonic antigen (CEA) family. CEACAM1 is expressed by certain epithelial, endothelial, lymphoid, and myeloid cells. Human CEACAM1 has many different splice variants; the abundance of CEACAM1 and the relative ratio of the different isoforms varies markedly among cell types and may be regulated in a context-dependent fashion. The isoforms with long (L) and short (S) cytoplasmic tails have different signaling properties. Notably, L isoforms contain a functional ITIM (immunoreceptor tyrosine-based inhibitory motif) and several serine and threonine residues that could serve as potential phosphorylation targets. The extracellular domain of CEACAM1 is heavily glycosylated, making its apparent molecular weight during electrophoresis much larger than its predicted size (57.6 kDa). CEACAM1 mediates intercellular adhesion through homo- and heterophilic interaction with other members of the CEACAM family. Studies indicate that CEACAM1 plays important roles in angiogenesis, neovascularization, insulin signaling, T cell signaling, and tumorigenesis. In addition, CEACAM1 can function as a receptor for several microbial pathogens.

Product:

PBS, 4M Urea, PH7.4

Molecular Weight:

~45kDa

Swiss-Prot:

P13688

Purification&Purity:

Transferred into competent cells and the supernatant was purified by NI column affinity chromatography and the purity is > 85% (by SDS-PAGE).

Restriction Sites:

NdeI-XhoI

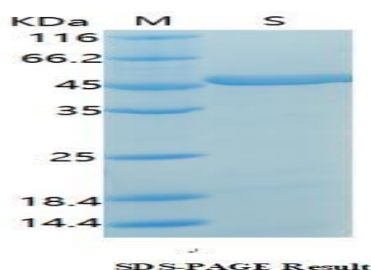
Storage&Stability:

Store at 4 °C short term. Aliquot and store at -20 °C long term. Avoid freeze-thaw cycles.

Expression Vector:

pet-22b(+)

DATA:



Note:

For research use only, not for use in diagnostic procedure.