

PRODUCT DATA SHEET



Complex Biotech Co., Ltd

CD107a/LAMP1 Recombinant Protein

Catalog: BCP3377

Host: E.coli

Tag: His-tag

BackGround:

Lysosome-associated membrane protein 1 and 2 (LAMP1 and LAMP2) are two abundant lysosomal membrane proteins. Both are transmembrane proteins and are heavily glycosylated at the amino-terminal luminal side of the lysosomal inner leaflet, which protects the proteins from proteolysis. The carboxy terminus of LAMP1 is exposed to the cytoplasm and contains a tyrosine sorting motif that targets LAMP to lysosomal membranes. LAMP1 and LAMP2 are 37% homologous in their protein sequences. Both LAMP1 and LAMP2 are involved in regulating lysosomal motility during lysosome-phagosome fusion and cholesterol trafficking.

Product:

PBS, 4M Urea, PH7.4

Molecular Weight:

~37kDa

Swiss-Prot:

P11279

Purification&Purity:

Transferred into competent cells and the supernatant was purified by NI column affinity chromatography and the

purity is > 85% (by SDS-PAGE).

Restriction Sites:

NdeI-XhoI

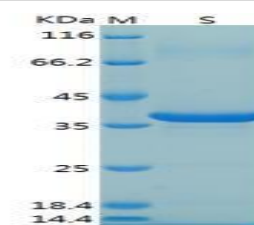
Storage&Stability:

Store at 4 °C short term. Aliquot and store at -20 °C long term. Avoid freeze-thaw cycles.

Expression Vector:

pet-22b(+)

DATA:



SDS-PAGE Result

Note:

For research use only, not for use in diagnostic procedure.