

PRODUCT DATA SHEET

COMPLEX

Complex Biotech Co., Ltd

CD116/CSF2RA Recombinant Protein

Catalog: BCP3384

Host: E.coli

Tag: His-tag

BackGround:

Granulocyte-macrophage colony-stimulating factor receptor subunit alpha (GM-CSF Receptor α), also known as CSF2RA and CD116, is a type 1 transmembrane protein with low affinity for GM-CSF. GM-CSF Receptor α is primarily expressed on myeloid cells, including granulocytes, monocytes, macrophages, and dendritic cells. GM-CSF Receptor α forms a heterodimeric receptor complex with GM-CSF Receptor β , creating the high affinity GM-CSF receptor. Upon dimerization and ligand binding, the β subunit becomes phosphorylated and transduces signals via Jak/STAT and MAPK pathways for cell proliferation, differentiation, and survival. Oligomerization of the high affinity GM-CSF Receptor α/β complex is required for optimal intracellular signal transduction. Soluble GM-CSF Receptor α , either secreted or cleaved from the cell surface, can competitively bind GM-CSF, preventing membrane receptor signaling. Multiple isoforms of GM-CSF Receptor α have been described.

Product:

PBS, 4M Urea, PH7.4

Molecular Weight:

~33kDa

Swiss-Prot:

P15509

Purification&Purity:

Transferred into competent cells and the supernatant was purified by NI column affinity chromatography and the purity is > 85% (by SDS-PAGE).

Restriction Sites:

NdeI-XhoI

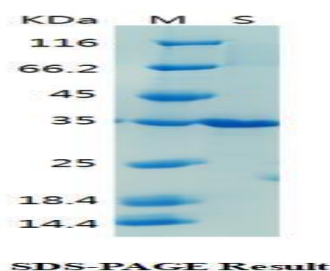
Storage&Stability:

Store at 4 °C short term. Aliquot and store at -20 °C long term. Avoid freeze-thaw cycles.

Expression Vector:

pet-22b(+)

DATA:



Note:

For research use only, not for use in diagnostic procedure.