

PRODUCT DATA SHEET

COMPLEX

Complex Biotech Co., Ltd

CD152 Recombinant Protein

Catalog: BCP3404

Host: E.coli

Tag: His-tag

BackGround:

Cytotoxic T-lymphocyte protein 4 (CTLA-4, CD152) is an Ig superfamily member that negatively regulates early T cell activation. The CTLA-4 protein is primarily expressed on T cells, including CD8⁺ cytotoxic T cells, CD4⁺ helper T cells, and CD4⁺/FoxP3⁺ regulatory T cells. CTLA-4 protein competes with CD28 for B7.1 (CD80) and B7.2 (CD86) binding at the cell surface, which results in the down regulation of T cell activity. The activation of SHP-2 and PP2A downstream of CTLA-4 attenuates TCR signaling. Research studies indicate that CTLA4 knockout mice display lymphoproliferative disorders leading to early death, confirming the role of CTLA-4 as a negative regulator of T cells. Mutations in the corresponding CTLA4 gene are associated with multiple disorders, including insulin-dependent diabetes mellitus, Graves disease, Hashimoto thyroiditis, celiac disease, systemic lupus erythematosus, and type V autoimmune lymphoproliferative syndrome. Additional studies demonstrate that CTLA-4 blockade is an effective strategy for tumor immunotherapy.

Product:

PBS, 4M Urea, PH7.4

Molecular Weight:

~17kDa

Swiss-Prot:

P16410

Purification&Purity:

Transferred into competent cells and the supernatant was purified by NI column affinity chromatography and the purity is > 85% (by SDS-PAGE).

Restriction Sites:

NdeI-XhoI

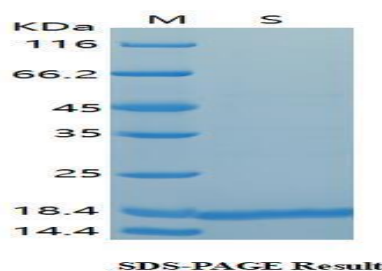
Storage&Stability:

Store at 4 °C short term. Aliquot and store at -20 °C long term. Avoid freeze-thaw cycles.

Expression Vector:

pet-22b(+)

DATA:



Note:

For research use only, not for use in diagnostic procedure.