

PRODUCT DATA SHEET



Complex Biotech Co., Ltd

CD158k Recombinant Protein

Catalog: BCP3413

Host: E.coli

Tag: His-tag

BackGround:

The killer immunoglobulin-like receptors (KIRs) on natural killer (NK) cells regulate the inhibition and activation of NK-cell responses through recognition of human leukocyte antigen (HLA) class I molecules. KIR3DL1, a receptor for HLA-B antigens with the Bw4 allele, transmits an inhibitory signal to prevent killer cell-mediated cytotoxicity. KIR3DL1 encodes a 444 amino acid type I transmembrane protein, containing 3 immunoglobulin-like C2-type domains. Human KIR3DL1 maps to chromosome 19q13.4.

Product:

PBS, 4M Urea, PH7.4

Molecular Weight:

~35kDa

Swiss-Prot:

P43630

Purification&Purity:

Transferred into competent cells and the supernatant was purified by NI column affinity chromatography and the

purity is > 85% (by SDS-PAGE).

Restriction Sites:

NdeI-XhoI

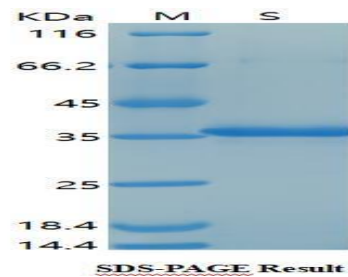
Storage&Stability:

Store at 4 °C short term. Aliquot and store at -20 °C long term. Avoid freeze-thaw cycles.

Expression Vector:

pet-22b(+)

DATA:



Note:

For research use only, not for use in diagnostic procedure.