

# PRODUCT DATA SHEET

**COMPLEX**

Complex Biotech Co., Ltd

## CD170 Recombinant Protein

Catalog: BCP3424

Host: E.coli

Tag: His-tag

### BackGround:

Two families of mammalian lectin-like adhesion molecules bind glycoconjugate ligands in a sialic acid-dependent manner: the selectins and the sialoadhesins. The sialic acid-binding immunoglobulin superfamily lectins, designated siglecs or sialoadhesins, are immunoglobulin superfamily members recognizing sialylated ligands. Siglec-5 binds equally to  $\alpha$ 2,3-linked and  $\alpha$ 2,6-linked sialic acid. There exist four isoforms of hSiglec-5 possessing three (hSiglec-5-3L and -3C) or four (hSiglec-5-4L and -4S) extracellular domains linked to long (hSiglec-5-3L and -4L) or short (hSiglec-5-4S) cytoplasmic tails or existing as a soluble isoform (hSiglec-5-3C). Siglec-5 is expressed by monocytes and neutrophils, but is absent from leukemic cell lines representing early stages of myelomonocytic differentiation. Siglec-5 may play a role in the diagnosis and monitoring of acute myeloid leukemia (AML).

### Product:

PBS, 4M Urea, PH7.4

### Molecular Weight:

~47kDa

### Swiss-Prot:

O15389

### Purification&Purity:

Transferred into competent cells and the supernatant was purified by NI column affinity chromatography and the purity is > 85% (by SDS-PAGE).

### Restriction Sites:

NdeI-XhoI

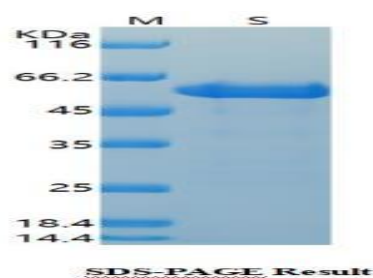
### Storage&Stability:

Store at 4 °C short term. Aliquot and store at -20 °C long term. Avoid freeze-thaw cycles.

### Expression Vector:

pet-22b(+)

### DATA:



### Note:

For research use only, not for use in diagnostic procedure.