

# PRODUCT DATA SHEET

**COMPLEX**

Complex Biotech Co., Ltd

## CD329 Recombinant Protein

Catalog: BCP3464

Host: E.coli

Tag:

His-tag

### BackGround:

Two families of mammalian lectin-like adhesion molecules bind glycoconjugate ligands in a sialic acid-dependent manner: the selectins and the sialoadhesins. The sialic acid-binding immunoglobulin superfamily lectins, designated siglecs or sialoadhesins, are immunoglobulin superfamily members recognizing sialylated ligands. The common sialic acids of mammalian cells are N-acetylneuraminic acid (Neu5Ac) and N-glycolylneuraminic acid (Neu5Gc). Siglec-1 mediates local cell-cell interactions in lymphoid tissues and can be detected at contact points of macrophages with other macrophages, sinus-lining cells and reticulum cells. Siglec-7, highly expressed in monocytes and resident blood cells but not in parenchymatous cells, mediates inhibition of natural killer cell cytotoxicity. Siglec-9 is closely homologous to Siglec-7. It is highly expressed in peripheral blood leukocytes (not eosinophils), liver, bone marrow, placenta and spleen. Siglec-8, a type I membrane protein, is selectively expressed on human eosinophils, basophils and mast cells, where it regulates their function and survival.

### Product:

PBS, 4M Urea, PH7.4

### Molecular Weight:

~42kDa

### Swiss-Prot:

Q9Y336

### Purification&Purity:

Transferred into competent cells and the supernatant was purified by NI column affinity chromatography and the purity is > 85% (by SDS-PAGE).

### Restriction Sites:

NdeI-XhoI

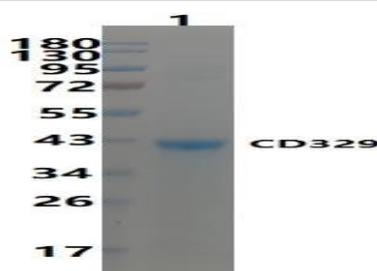
### Storage&Stability:

Store at 4 °C short term. Aliquot and store at -20 °C long term. Avoid freeze-thaw cycles.

### Expression Vector:

pet-22b(+)

### DATA:



### Note:

For research use only, not for use in diagnostic procedure.