

# PRODUCT DATA SHEET

**COMPLEX**

Complex Biotech Co., Ltd

## CD23A Recombinant Protein

Catalog: BCP3480

Host: E.coli

Tag: His-tag

### BackGround:

The human leukocyte differentiation antigen CD23 (FCE2) is a type II integral membrane glycoprotein that is expressed on mature B cells, monocytes, eosinophils, platelets and dendritic cells. In mouse, CD23 is found only on mature B cells. CD23 is a low affinity IgE receptor that mediates IgE-dependent cytotoxicity and phagocytosis by macrophages and eosinophils. CD23 associates as an oligomer where cooperative binding of at least two lectin domains is required for high affinity IgE binding to CD23. It may play a role in antigen presentation by B cells by interacting with CD40. CD23 has been shown to be associated with the Fyn tyrosine kinase. The truncated molecule can be secreted, then function as a potent mitogenic growth factor. ADAM8, ADAM15 and MDC-L catalyze ectodomain shedding of CD23. Intestinal cells coexpress CD23a and CD23b, and the two splice forms show different localizations in polarized cells.

### Product:

PBS, 4M Urea, PH7.4

### Molecular Weight:

~35kDa

### Swiss-Prot:

P06734

### Purification&Purity:

Transferred into competent cells and the supernatant was purified by NI column affinity chromatography and the purity is > 85% (by SDS-PAGE).

### Restriction Sites:

NdeI-XhoI

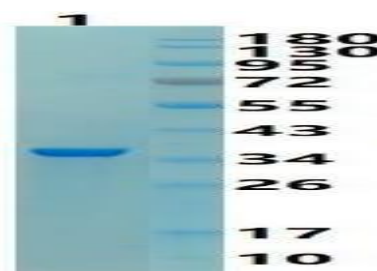
### Storage&Stability:

Store at 4 °C short term. Aliquot and store at -20 °C long term. Avoid freeze-thaw cycles.

### Expression Vector:

pet-22b(+)

### DATA:



### Note:

For research use only, not for use in diagnostic procedure.